

Notice of Intent to Apply Aquatic Herbicide

Colorado State University Center for Environmental Management of Military Lands will be working with Beale Air Force Base (AFB) 9th Civil Engineer Squadron Environmental Element Staff (9 CES/CEIE) and Barrow's Weed Control to remove invasive plant species from multiple locations on Beale AFB.

- A) Chemical control of Himalayan blackberry (*Rubus armeniacus*) along Reeds Creek (Figure 1). Chemical control will consist of green leaf application of Roundup Custom (an aquatic-approved glyphosate formulation) mixed with a non-ionic (aquatic-safe) surfactant. As no water will be treated directly, there would be no restrictions for irrigation, recreation or domestic purpose for this application. Precautions will be followed to minimize the potential for aquatic contamination. There are no access restrictions for this herbicide.

For additional information about herbicide application please contact Cole Hovanec (cole.hovanec@colostate.edu) or Ethan Snee (ethan.snee@colostate.edu).

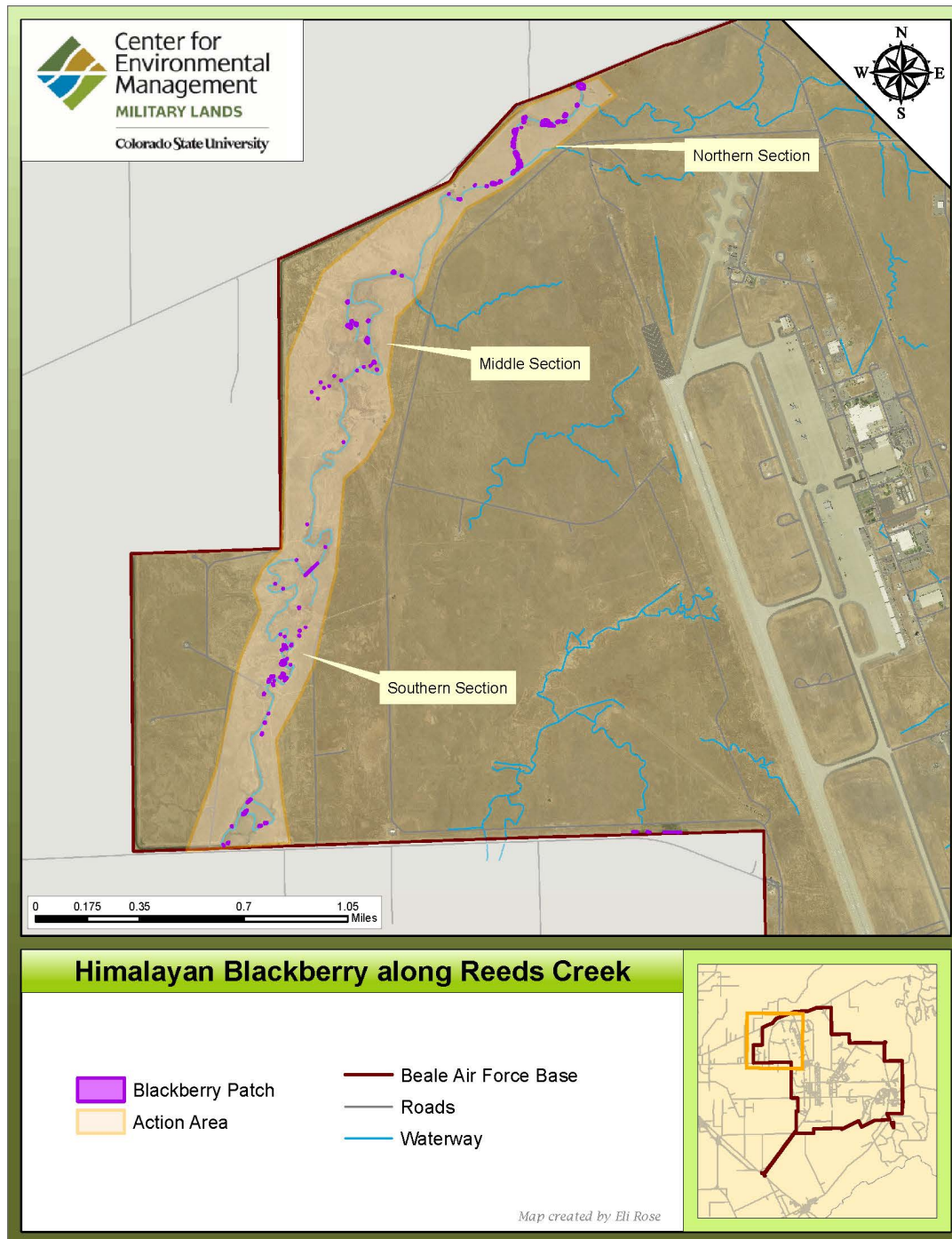


Figure 1. Overview of Himalayan blackberry infestations along Reeds Creek on Beale Air Force Base, California.